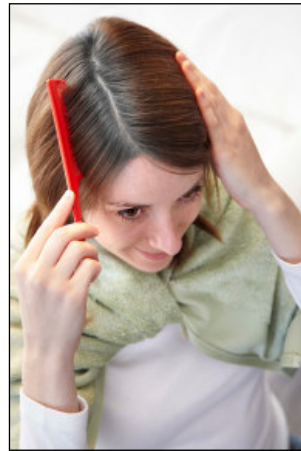


## Home Hair Colour Step-By-Step



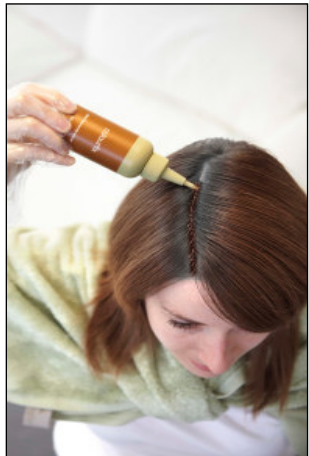
**Step 1:** Shampoo your hair using the sachet of Clarifying Shampoo to remove build-up and prepare the hair for colouring. Towel dry your hair.



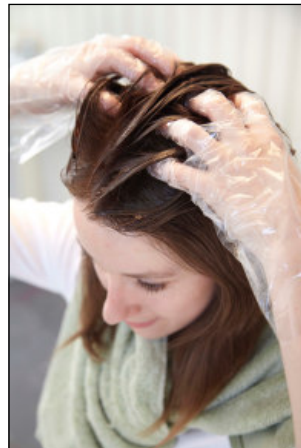
**Step 2:** Comb your hair.



**Step 3:** Put on the gloves provided. Uncap both bottles and pour the contents of the Colour Gel bottle into the Colourfix bottle. Replace the applicator cap on the Colourfix bottle and shake thoroughly.



**Step 4:** Unscrew the tip of the applicator bottle and use immediately. Squeeze the colour through the applicator onto the root.



**Step 5:** Continue applying colour to the whole of the hair. Gently massage the colour into the hair until all the hair has been covered. Then cover the hair with the developing cap and leave for 30 minutes to develop. For strong grey hair or extra lightening, you may leave the colour on for 40 minutes. **If you are only covering regrowth,** follow steps 1-4. Gently massage the colour into the roots only, cover with the developing cap and leave for 20 minutes. Remove the cap, apply the colour to the rest of the hair, cover with the cap again and leave for a further 10 minutes. Proceed to step 6.



**Step 6:** Remove the developing cap. Wearing the gloves, add a few drops of water to the colour and work into a lather. Rinse thoroughly until the water runs clear. Using the Tints of Nature Shampoo sachet, shampoo the hair and rinse thoroughly. Apply the Tints of Nature Conditioner sachet, comb through the hair and leave on for 5 minutes. Rinse thoroughly. Style hair as desired.